



Midwest Agrivoltaic Systems Service Description

3335 Old 60 Drive
Seneca, MO 64865

Our Vision

We help agricultural entrepreneurs and nonprofit organizations sustainably produce the power they and their communities need for the future, without disrupting their rural lifestyle.

Our Services

We are a dynamic organization that focuses on all aspects of agrivoltaic project operations.

EPC: Our company provides efficient consulting/management for engineering, procuring, and constructing agrivoltaic projects.

AgRack Racking System: We have developed our own elevated ground mount racking system which seeks to optimize Bi-facial PV modules and the space that can be used

beneath fixed tilt solar arrays. Our racking system is low maintenance with clearances that allow agricultural equipment to operate beneath the solar arrays.

Grant Writing: Our experienced team of grant writers has successfully assisted in the submission of applications and received approval for grants from the Department of Energy and Department of Agriculture.

Consulting/Grant Writing Pricing

For-Profit Entities: \$100/hr

Agricultural Entities: \$85/hr

Non-Profit Entities: \$60/hr

Our Project Pricing

Below is an expectation of cost based upon work scope for the EPC of grid tied agrivoltaic projects:

Residential Scale (0-15 kW): \$2.50-3.50 per watt

Commercial Scale (15-250 kW): \$2.00-\$2.50 per watt(3 phase)

Industrial Scale (250kW+): \$1.85-\$2.00 per watt

These pricings are estimates based on previous projects completed and are subject to change depending on project details. MW sized projects can get lower cost.



Below is an expectation of materials pricing for our AgRack elevated solar racking system for use on agrivoltaic and parking lot projects:

Residential Scale(0kW-25kW): \$0.80-\$0.90/Watt

Commercial Scale(25kW-150kW): \$0.70-\$0.80/Watt

Industrial Scale(150kW-2MW): \$0.55-\$0.70/Watt

Midwest Agrivoltaic Systems - *Sharing the Sun since 2021*

Community/Utility Scale(2MW+): \$0.45-\$0.58/Watt

Verify pricing with an MAS member for your custom project*

Special considerations which could affect pricing:

- Subterranean structure.
- Clearance requirements.
- Wind/snow/seismic loading requirements.

Questions?

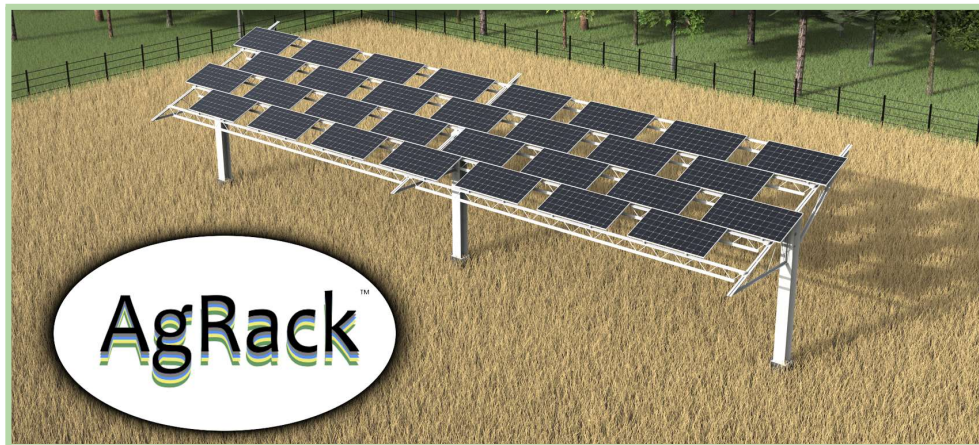
We look forward to working with you to develop more agrivoltaic projects in the Midwest! Feel free to contact us with any questions/projects that you may have and we will be happy to schedule a meeting with you.

Website: AgVolts.com

Email: Contact@agvolts.com

Phone Number: 417-456-1236

Address: 3335 Old 60 Dr. Seneca, MO, 64865



Midwest Agrivoltaic Systems - Sharing the Sun since 2021